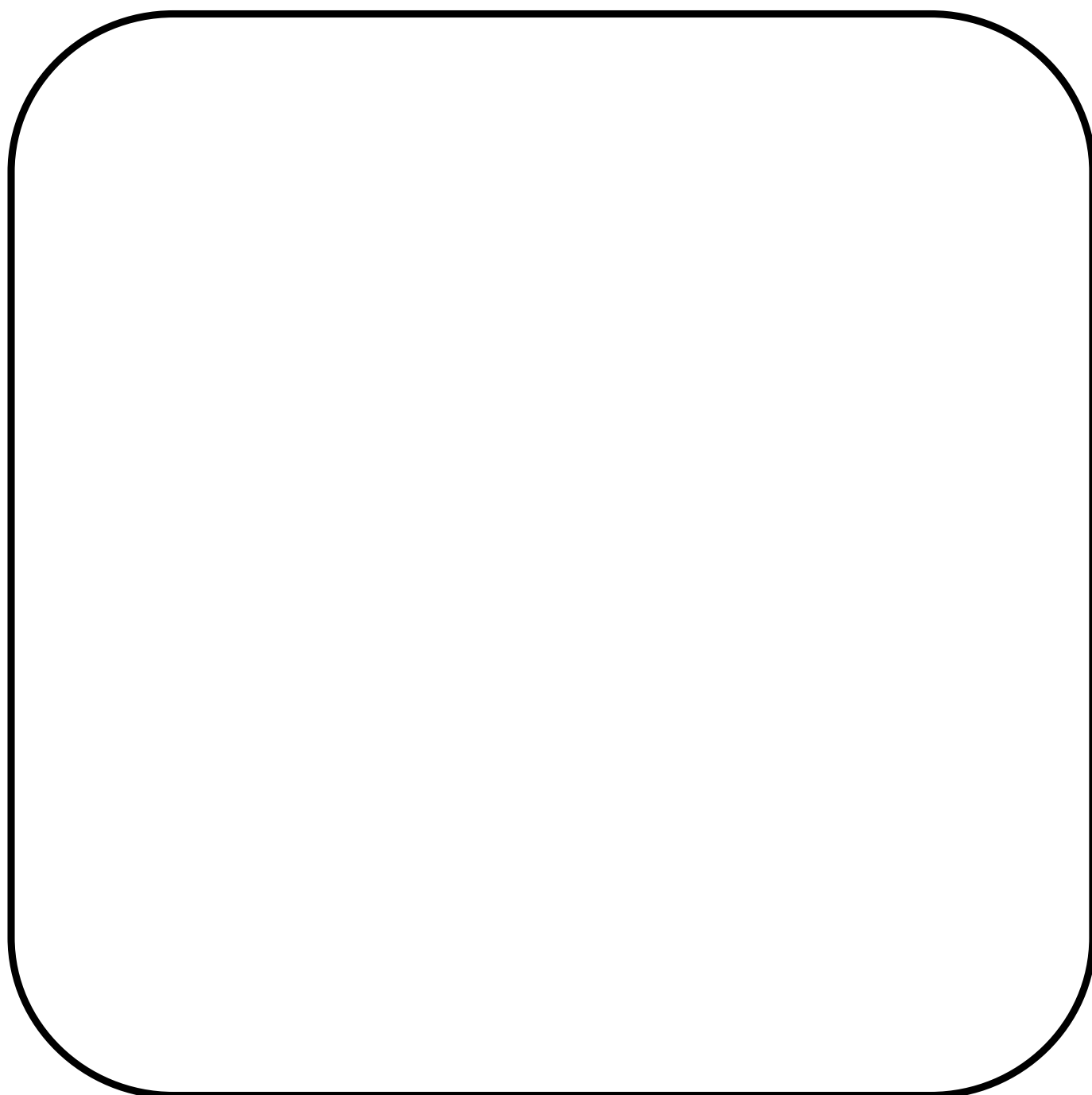


**VENTILI
SIGURNOSTI**

16

**SAFETY
VALVES**





VENTILI SIGURNOSTI SAFETY VALVES

VS

PRIMENA

Ventili sigurnosti su uređaji koji automatski, bez pomoći bilo koje energije, osim energije radnog fluida, ispuštaju određenu količinu fluida tako da onemogućavaju prekoračenje unapred zadatog pritiska. Primenuju se u energetskim objektima za proizvodnju vode.

IZVOĐENJE

Ventile sigurnosti izrađujemo sa nazivnim prečnicima DN 50 do DN 150 (mm), pritiskom baždarenja do 16 (bar) i za temperaturu fluida 150 (°C).

U normalnom režimu rada postrojenja, ventili sigurnosti su zatvoreni i obezbeđuju neophodno zaptivanje. Kada se pritisak poveća iznad dozvoljene veličine, podešeni ventil sigurnosti se automatski otvara i izbacuje višak radnog fluida, usled čega se pritisak smanjuje ispod dozvoljene vrednosti. Posle izbacivanja fluida, ventil sigurnosti se zatvara i ostaje u tom položaju sve dok pritisak ponovo ne poraste iznad dozvoljene vrednosti.

Priteznom navrtkom vrši se sabijanje opruge, odnosno podešavanje veličine sile u opruzi, čime se definiše pritisak otvaranja ventila.

Priključne mere prirubnica su prema JUS M.B6.011 i DIN 2501.

MATERIJAL

Kućište, zaporno telo, nosači opruge i kliznih ležajeva su od konstrukcionih čelika, a nosači zapornog tela i zaptivna površina na kućištu od nerđajućeg čelika.

Klizne čaure su od specijalnog sivog liva, a opruga od odgovarajućeg čelika za opruge.

U zavisnosti od radne temperature fluida zaptivni elementi su od EPDM-a ili specijalnog EPDM-a.

NARUČIVANJE

Naručivanje se vrši opisno kao što je naznačeno u opštim napomenama.

APPLICATION

Safety valves are the automatic units, which without help of any kind of energy, except the operating fluid energy, discharge a certain quantity of fluid and in that way make impossible exceeding of in advance specified pressure value. They are applied in power plants for production of water.

FABRICATION

Safety valves are made with nominal diameters, ranging from DN 50 to DN 150 (mm), and calibrating pressure of up to NP 16 (bar), and fluid temperature up to 150(°C)

In normal work regime of the plant, conical valves are closed, providing for necessary sealing. When the pressure is increased above the admissible value, the adjusted safety valve is opened automatically, discharging the excess operating fluid, causing the pressure to decrease below the admissible value. After the fluid discharge, the safety valve is closed, remaining in that position until the pressure exceeds the admissible value again.

By using the fixing nut, the spring compression is achieved, that is, the spring force value is adjusted, the valve opening pressure being defined in that way. The flanges fitting dimensions are according to JUS M.B6.011 and DIN 2501 Standard.

MATERIAL

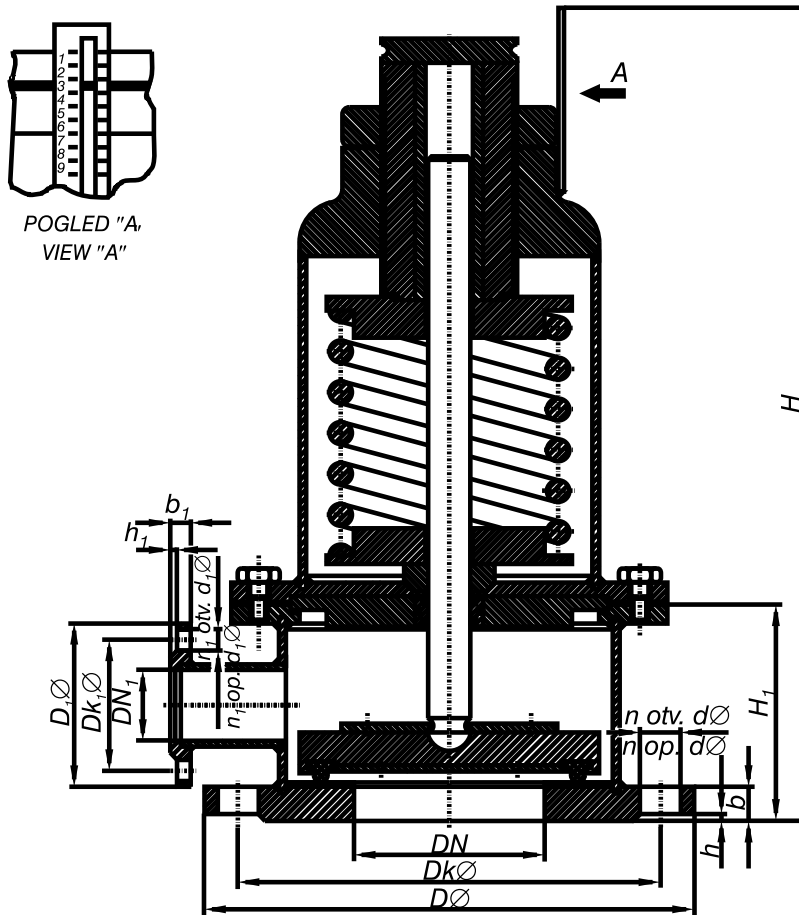
The housing, shutoff body, spring and slide bearings supports are made of structural steels and the shutoff body supports and housing sealing surface are made of stainless steel.

The sliding bushes are made of a special grey cast iron, and the spring is made of corresponding steel used for springs fabrication.

Depending on the fluid operating temperature, the sealing elements are made of EPDM or special EPDM.

HOW TO ORDER

You can order as described in general



16

DN	DØ	DkØ	DN ₁ Ø	D ₁ Ø	Dk ₁ Ø	H	H ₁	b	b ₁	h	h ₁	n	n ₁	dØ	d ₁ Ø	m(kg)
50	165	125	40	150	110	350	100	18	16	3	3	4	4	18	18	21
65	185	145	50	165	125	360	107	18	18	3	3	4	4	18	18	23
80	200	160	65	185	145	370	117	20	18	3	3	4	4	18	18	26
100	220	180	80	200	160	420	127	20	20	3	3	8	4	18	18	34
125	250	210	100	220	180	450	137	22	20	3	3	8	8	18	18	40
150	285	240	125	250	210	470	147	22	22	3	3	8	8	22	18	49